

# XU2HN (Rev 1) Head Mount RTD Non-Isolated Transmitter

USB Programmable Non-Isolated RTD Temperature Head Mount 4~20mA Output Loop Powered Transmitter

## Features.

- Programmable via USB (requires the **XU-USB** programming key).
- No power supply or calibration required during programming.
- Input types: RTD Pt100 and Pt1000.
- Output is Linear with Temperature.
- High Accuracy 0.1%.
- Reverse Polarity Protected.
- Case Temperature range -20°C to +65°C.
- Head Mount.
- Easy to Install.
- Low Cost.



## Ordering Information.

- XU2HN** Head Mount RTD Transmitter Non-Isolated; Standard = RTD Pt100, 0~100°C Input; Upscale; 4~20mA Output (Loop Powered).
- XU-Spring-Kit** For vibration areas or where wide ambient temperatures exist on the probe head.
- XU-USB** USB Programming Key

Download free software via the link from: [www.intech.co.nz/xu2hn](http://www.intech.co.nz/xu2hn)

**Note:** The table below shows the USB programmable input types etc for the XU2HN: The XU2HN can be pre-programmed before dispatch or is easily programmed using the **XU-USB** programming key and the free XU programming software.

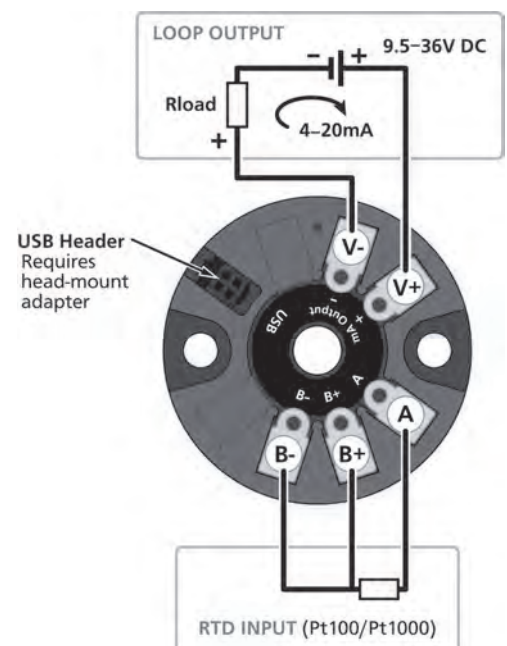
ITEM	CODE		DESCRIPTION
SERIES	<b>XU2HN-</b>		Head Mount RTD Transmitter Non-Isolated
Type of Input	<b>Pt100-</b>		RTD Pt100 DIN (Options JIS & CN10)
	<b>Pt1000-</b>		RTD Pt1000 DIN (Options JIS & CN10)
Measuring Range		-	State Measuring Range
Output Action on Sensor Fail		<b>US</b>	Upscale
		<b>DS</b>	Downscale

## Ordering Examples:

- 1/ XU2HN - Pt100 - 0~100C - DS XU2HN; RTD Pt100 DIN 0~100°C Input; Downscale; 4~20mA Output.
- 2/ XU2HN - Pt1000 - 0~50C - US XU2HN; RTD Pt1000 DIN 0~50°C Input; Upscale; 4~20mA Output.

## XU2HN Common Specifications.

Output	2-wire 4~20mA (Loop Powered)
Power Supply	9.5~36Vdc
Supply Voltage Sensitivity	<±0.005%/V FSO
Output Load Resistance	700Ω at 24Vdc (50Ω/V above 9.5Vdc)
Maximum Output Current	Limited to <28mA (Emission and Immunity)
Emissions Compliance	EMC EN 61326
Immunity Compliance	EMC EN 61326
Safety Compliance	EMC EN 61010-1
Accurate to	<±0.03% FSO Typical
Ambient Drift	<±0.003%/°C FSO Typical
Noise Immunity	125dB CMRR Average (2.0kVdc Limit)
R.F. Immunity	<1% effect FSO Typical
Response Time	400msec Typical (10~90% 300msec Typical)
Sensor Fail	Low 3.8mA, High 21mA
Startup Time	3 seconds, 3.7mA output
Operating Temperature	-20~65°C
Storage Temperature	-20~100°C
Operating Humidity	5~85%RH MAX (Non-Condensing)
Mounting	Head Mount
Dimensions	H=44, W=44, D=23mm



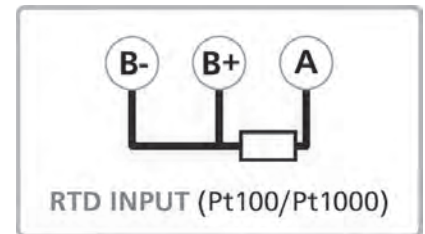
**Product Liability.** This information describes our products. It does not constitute guaranteed properties and is not intended to affirm the suitability of a product for a particular application. Due to on-going research and development, designs, specifications, and documentation are subject to change without notification. Regrettably, omissions and exceptions cannot be completely ruled out. No liability will be accepted for errors, omissions or amendments to this specification. Technical data are always specified by their average values and are based on Standard Calibration Units at 25C, unless otherwise specified. Each product is subject to the 'Conditions of Sale'.

**Warning:** These products are not designed for use in, and should not be used for patient connected applications. In any critical installation an independent fail-safe back-up system must always be implemented.

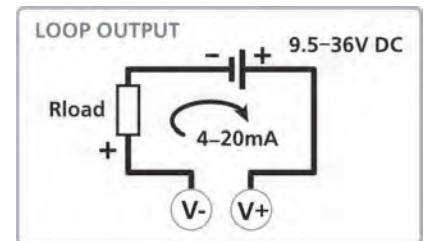
### RTD Input Specifications.

RTD Input	Pt100 or Pt1000 DIN 3-wire Type. (2-wire can be used with offset calibration)
Sensor Current	0.15mA Nominal
Lead Wire Resistance	Pt100: 10Ω/wire Maximum Pt1000: 5Ω/wire Maximum
	0.02% FSO Offset Error per Ω of Lead Resistance
USB Programmable Zero	0~±99% of the Span
USB Programmable Span	-200~850°C
Sensor Break Output Drive	Funct High Upscale Funct Low Downscale
Linearity (Pt100)	0.02% FSO for Span Inputs ≤200°C 0.1% FSO for Span Inputs ≤850°C
Linearity (Pt1000)	0.02% FSO for Span Inputs ≤200°C 0.2% FSO for Span Inputs ≤520°C
Other Available RTD Types	JIS and CN10

### RTD Input Wiring:



### Output Wiring:



### XU2HN Wiring, Installation and Maintenance.

**The XU2HN is to be Installed and Serviced by Service Personnel Only. No Operator / User Serviceable Parts.**

All power and signals must be de-energised before connecting any wiring.

#### Mounting.

\* Also refer to Connection Diagrams and Notes.

- (1) Mount in a water proof industrial connection head.
- (2) Do not subject to vibration or excess temperature or humidity variations.
- (3) Screws are supplied. Do not overtighten.
- (4) Avoid mounting near power control equipment.

#### Analogue Signal Wiring.

- (1) All signal cables should be good quality overall screened INSTRUMENTATION CABLE with the screen earthed at one end only.
- (2) Signal cables should be laid a minimum distance of 300mm from any power cables.
- (3) For 2 wire current loops, Austral Standard Cables B5102ES is recommended.
- (4) It is recommended that you do not ground analogue signals and use power supplies with ungrounded outputs.
- (5) Lightning arrestors should be used when there is a danger from this source.
- (6) Refer to diagrams for connection information. Observe polarity and the correct terminal connections for wiring correctly.

#### RTDs.

- (1) Avoid locating the RTD where it will be in a direct flame.
- (2) Locate it where the average temperature will be measured. It should be representative of the mass.
- (3) Immerse the RTD far enough so that the measuring point is entirely in the temperature to be measured; nine to ten times the diameter of the protection tube is recommended. Heat that is conducted away from the measuring point causes an error in reading.

#### XU2HN Commissioning.

- (1) **WARNING: Ensure that all programming is carried out BEFORE any wiring takes place!**
- (2) Check that the XU2HN has been set to the correct input ranges and all functions such as Upscale/Downscale. Observe polarity and the correct terminal connections for wiring correctly. Only use certified calibration equipment. Once the above conditions have been met, and the wiring checked, apply power to the XU2HN, and associated current loops, transducers, sensors and indicators etc. Allow a 5 minute warm-up period.

**RTD Inputs:** A small error can occur due to differences in cable resistance in the RTD legs, and errors in the RTD itself. (Usually less than 0.5°C).

#### XU2HN Maintenance - RTD Inputs.

- (1) Check RTD's in place. Do it regularly - at least once every six months.
- (2) Replace defective protection tubes - even if they look good they may not be air or gas tight.
- (3) Check cables entering the RTD sensor head.

**Intech** INSTRUMENTS LTD  
[www.intech.co.nz](http://www.intech.co.nz)  
Christchurch Ph: +64 3 343 0646  
Auckland Ph: 09 827 1930  
Email: [sales@intech.co.nz](mailto:sales@intech.co.nz)